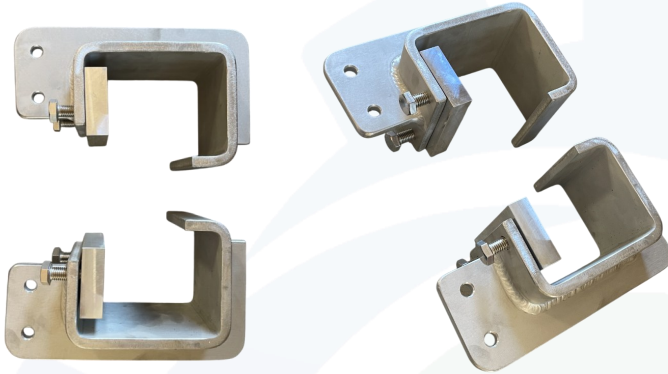




Seadraulics
Subsea Fluid Mechanics

XLX BRACKETS



FEATURES

- Crafted for ease of use and peace of mind
- Durability tested time and again
- Quick to install
- Additional custom mounting parts available

DESCRIPTION

Designed with superior engineering and robust functionality, the XLX brackets provide an optimal mounting solution for securing an ROV backpack to the XLX system. Crafted for durability and stability, these brackets ensure a reliable hold, making equipment installation effortless and secure.

With meticulous attention to detail, these brackets enhance operational efficiency, offering a streamlined and highly beneficial mounting experience. Their precision-engineered design delivers outstanding performance, ensuring that every attachment remains firm, even in demanding environments.

Upgrade your setup with the XLX brackets—built for strength, reliability, and ease of use.

Can be provided with e.g., a 50 x 50 x 6 mm aluminium angle set.

SAFETY NOTE

The strength of these Seadraulics brackets exceed that of the XLX beams. Please ensure the mounted load corresponds to your ROV system's specifications.



Seadraulics Pty Ltd
4/11 Anvil Way
Welshpool WA 6106 AUSTRALIA

Phone: +61 427 080 404
Email: info@seadraulics.com
Web: www.seadraulics.com