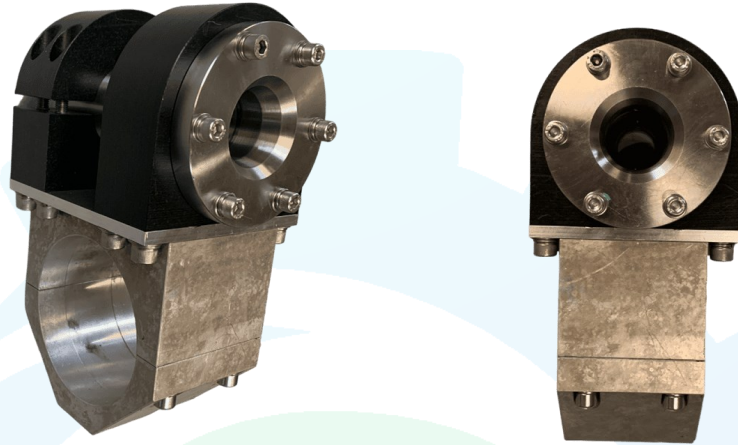


## WRIST MOUNT TYPE A DUAL PORT RECEPTACLE



### DESCRIPTION

Seadraulics' Hot Stabs and Receptacles are essential components for subsea operations, facilitating hydraulic tool operation, fluid transfer, chemical injections, and pressure monitoring. Engineered for minimal environmental impact, they ensure efficient fluid transfer with minimal leaks.

Compliant with ISO 13628-8 or API 17H standards, these versatile units can be customized to accommodate various port configurations, meeting specific application needs effectively and reliably.

The unit can be mounted on a underslung or rear mounted skid or any other custom location.

### FEATURES

- API 17H Type A Standard
- 10,000psi High Flow
- Wrist Mount
- Duplex Stainless 2205 or Super Duplex Stainless 2507

