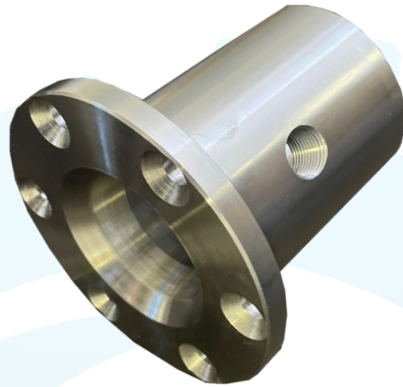


TYPE B SINGLE PORT RECEPTACLE—API 17H 10K PSI



DESCRIPTION

Seadraulics' Hot Stabs and Receptacles are essential components for subsea operations, facilitating hydraulic tool operation, fluid transfer, chemical injections, and pressure monitoring. Engineered for minimal environmental impact, they ensure efficient fluid transfer with minimal leaks.

Compliant with ISO 13628-8 or API 17H standards, these versatile units can be customized to accommodate various port configurations, meeting specific application needs effectively and reliably.

FEATURES

- Industry standard
- 10,000psi High Flow Single Port
- Flange Mount
- 1/2" NPT Port Size
- Duplex Stainless 2205 or Super Duplex Stainless 2507

