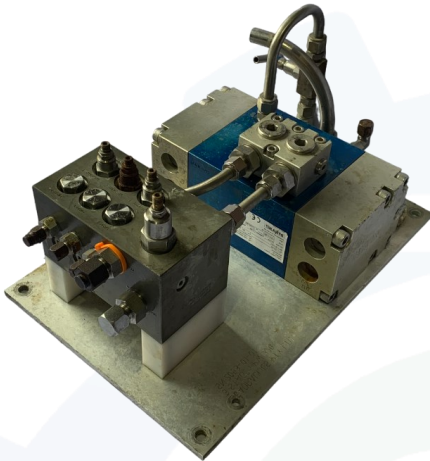




Seadraulics
Subsea Fluid Mechanics

3 STAGE FLUID INJECTION UNIT

HPW 220



FEATURES

- Adjustable hydraulic outputs
- Customizable pressure levels
- Compatible with most type of fluids
- ON / OFF control of hydraulic supply to the pump
- Operational hoses supplied
- Can supply various sized bladders to suit

DESCRIPTION

Seadraulics Fluid Injection Unit, with 3 stage pressure manifold, is a compact easy to use unit. At its heart is the proven Dynaset HPW220 reciprocating pump. Due to the nature of the output pressure curve of the Dynaset range, they lend themselves nicely to being driven from lower than full pressures, and as such will give a suitable linear multiplication factor of the input pressure relative to the output pressure.

The FIU has 5 input connections and 1 output connection. Three of the connections are to pilot on a particular pressure setting. These three ports (P1, P2, P3) are to be connected to ROV solenoids. These pilot ON/OFF ports require a minimum of 50 bar above the pressure in the return line to activate. The port is however capable of taking a maximum of 210bar.

TECHNICAL SPECIFICATIONS

Hydraulic input:	210 bar / 70 lpm
Hydraulic output:	220 bar / 50 lpm
Pressure selection:	3 separate, independent selections
Fluid compatibility:	Methanol, Mineral Oils, Water, Glycol Mixtures
Input connection:	3/4" JIC and 7/16" JIC
Output connection:	9/16" JIC
Dimensions:	400mm x 400mm x 230mm
Weight air:	22 kg in air



Seadraulics Pty Ltd
1/11 Anvil Way
Welshpool WA 6106 AUSTRALIA

Phone: +61 427 080 404
Email: info@seadraulics.com
Web: www.seadraulics.com